

FORWARD
LIFT

FCH4

**HEAVY DUTY
MOBILE COLUMN
LIFTING SYSTEM**

BATTERY OPERATED WITH INTERNAL CHARGER

No power cords to clutter up the service bay, improving portability.

INVERTED HYDRAULIC CYLINDER

The chrome piston rod is protected from debris and damage at all times extending the life of the product and substantially reducing maintenance costs.

AUTOMATIC STEERING SYSTEM

No need to manually pump the jacks up to move the columns in and out

FORKLIFT POCKETS

Relocate column in your shop with ease.

FIXED FORKS

Fit most large truck tires without adjustment (reducer sleeves available)

PATENTED CONTROL SYSTEM

No master/slave column - lift can be controlled from any column

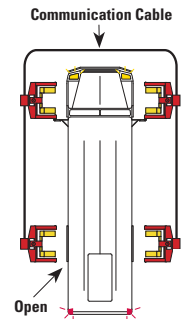


QUICK CONNECT CABLES

Lightweight, easy to connect and 33 feet long

HORSESHOE WIRING

While other mobile column lifts are connected by four cables, the wired FCH4 uses just three (forming a horseshoe), so the front or back of the lift is always open.



Shown:
FCHU2F4001



**USE THE LIFT
ON ANY
CONCRETE
SURFACE**

Mobile Column FCH4
is Gold Certified

Engineered to perform... Built to last!

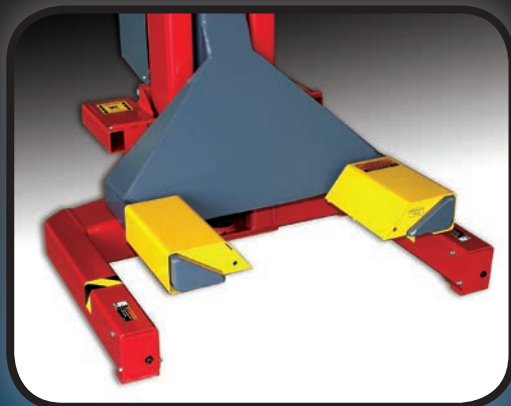
WWW.FORWARDLIFT.COM

FORWARD
LIFT

**GET THE MOST FROM
YOUR LIFTING
SYSTEM!**

FCH4 **FORWARD** **LIFT**

MOBILE COLUMN ACCESSORIES

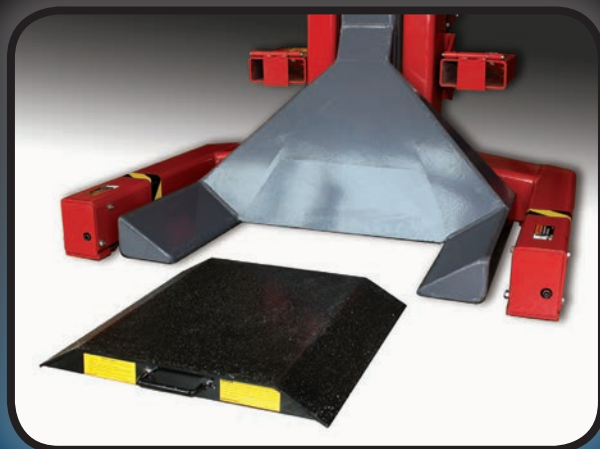


REDUCER SLEEVES

Steel reducer sleeves slide onto the forks to allow proper contact with smaller radius tires.

(14" to 20" tires / 356-508mm)

Shown: M140071



LARGE WHEEL RISER KIT

Larger tires are raised on ramps to allow for proper fork placement.

Shown: M140030

LED LIGHTING

High-efficiency LED lighting with convenient, single touch operation at the control panel provides hands-free lighting under the vehicle.



Shown: M140002



JACK STANDS

Available in 18,000 and 33,000 lbs. capacities with spring loaded caster wheels for easy positioning and portability.



Shown: RS18
18,000 lbs. capacity tripod stand

SPECIFICATIONS

MOBILE LIFT	FCH4	FCH6	FCH8
Column configuration	4	6	8
Capacity	72,000 lbs.	108,000 lbs.	144,000 lbs.
Rise		70" (1778 mm)	
Lifting cycles		12-14 per charge	
Column width		45.5" (1156 mm)	
Column height		102" (2590mm)	
Height at full stroke		144.75" (4464mm)	
Tire Dimensions	21" to 24" (533 - 610 mm) Truck road tires		
Clearance from fork to column		10" (254 mm)	
Speed of rise		78 seconds	
Charging voltage	110v-240v / 50/60Hz charger*		
Battery type	NG - 24 to 27*		

* Call factory for alternate voltage * Batteries not included - requires 2 per column



Shown: M140019

OPTIONAL WEIGHT GAUGE

Gauges approximate the weight being lifted by one column - turning pressure into weight.



Forward Lift
996 Industrial Drive
Madison, IN 47250

Phone: 800.423.1722
Fax: 812.273.7329
www.forwardlift.com



Lit# Forward FCH4_Mobile_Cutsheet_2012.05
(SUPERCEDES Forward FCH4_Mobile_Cutsheet_2011.12)

©2011 Forward Lift. Forward Lift is a brand of Vehicle Service Group, A Dover Company. All rights reserved. Unless otherwise indicated, Forward Lift, Vehicle Service Group, Dover and all other trademarks are property of Dover Corporation and its affiliates.

Exclusive Mobile Column Controls / U.S. Patent No. 6,983,196